

行业专家 ★ 纵横业界 30 年

Industry experts ★ Specialized in the industry for 30 years



AOTAI 澳太

创造 专利技术 (部分项目)

CREATION Proprietary Technology - Portion Item

- 双伺服节能注塑机
- 注塑机上拆式动模板滑脚装置
- 注塑机双出轴节能注射油缸
- 注塑机弹性拉杆螺母
- 注塑机空心球面结构的头板
- 注塑机弹性头板
- 注塑机单缸注塑机构
- 注塑机电脑操纵箱
- 注塑机液压系统闭环反馈控制装置
- 注塑机单油缸注射装置
- 金属压铸机压射装置
- 注塑机注射装置的外延式导杆
- 双色注塑机转盘离合分度锁紧装置
- 注塑机的液压控制系统
- 热固性注塑机的调温装置
- 塑料注射工艺参数的确定方法及注塑机
- 注塑件缺陷的智能修正方法及注塑机
- 注塑机夹板连体结构的尾板
- 注塑机螺杆接套装置
- 注塑机料筒定位装置
- 注塑机活塞旋转注射油缸
- 注塑机合模装置的双曲肘连杆
- 注塑机尾板 (弓形夹板连体结构)
- 直压锁模增压机构
- 二板注塑机的旋转抱闸机构
- 注塑机的独立保压机构
- 注塑机开模位置的精确控制方法
- 注塑机自动安全门装置
- 注塑机螺杆更换机构
- 油温调控装置
- 注塑机动模板设计
- 注塑机定模板设计
- 油缸行程可调结构
- 二板注塑机的锁模机构
- Double servo energy-saving injection molding machine
- Detachable moving platen sliding foot device
- Double-shaft & energy-saving injection cylinder
- Flexible tie bars nut
- Hollow spherical structure of the cephalic plate
- Flexible cephalic plate
- Single-cylinder injection structure
- Computer control box
- Hydraulic system closed-loop feedback control device
- Single-cylinder injection unit
- Metal die casting machine injection mechanism
- Extensional guide-bar for injection device
- Double colored injection molding machine rotary table clutch dividing locking device
- Hydraulic control system of injection molding machine
- Temperature regulation unit of thermosetting injection molding machine
- Determining method of plastic injection process parameters
- Intelligent correction method of defects in the course of injection
- Tail-board of splint connected structure
- Screw connecting device
- Barrel positioning device
- Rotary piston injection cylinder
- Double crank connecting-rod of the clamping unit
- Tail-board of the injection molding machine (arch splint connected structure)
- Direct pressure clamping pressurized construction
- Rotary band-type brake structure of two-platen plastic inject machine
- Separate pressure maintaining structure
- Precision control method of mold-opening position
- Automatic safety door device
- Screw change mechanism
- Oil temperature regulation device
- Design of moving platen
- Design of fixed platen
- Adjustable structure of oil cylinder stroke
- Clamping mechanism of two-platen machine

澳太·欧款注塑机



AOTAI • European Style 90~3000 Tons Injection Molding Machine

中外合资宁波威力仕高科机械有限公司

NINGBO WELLISH HI-TECH MACHINERY CO.,LTD.

地址: 宁波北仑沿山河北路58-66号海龙工业园/A区 (原: 海太高科机械有限公司)

Add: Area A, No.58-66 North Yanshanhe Road, Beilun, Ningbo, 315800, China

International Department

NINGBO BEILUN ALLWAY MACHINERY CO.,LTD.

Add: No.58-66 North Yanshanhe Road, Beilun, Ningbo, China

P.C: 315800

Tel: 0086-574-8611 6106

Fax: 0086-574-8611 6107

E-mail: sales@aotai-machinery.com

www.aotai-machinery.com

www.allway-machinery.com



WELLISH HI-TECH MACHINERY CO.,LTD. / 威力仕高科机械有限公司



海龙机械 ★ 融合 ★ 创新 ★ 超越

HAILONG GROUP with Integration & Creation & Transcendence



WELLISH 公司简介

海龙企业 —— 宁波威力仕高科机械有限公司（原：海太高科公司），位于宁波国家开发区•北仑 —— 海龙工业园 / A区。长期专业从事高精注塑机制造，产品（合模力）先后推出90~3000Tons，20多种规格引领市场的各种应用多款型注塑机。

公司拥有长期专业于各种注塑机研发 / 制造工程技术资深团队，创造有多个注塑机产品专利技术和具备顾客个性化需求方案的快速响应产出机制，技术设计与制造装备实力雄厚，产品设计集国际先进技术与精益求精创新、超越理念。

公司以海龙企业综合实力为基石的海龙机械智能制造体系，融合欧洲产品技术“威力仕” & “澳太”品牌多款出口型高端特种注塑机，深受国内外顾客惠选。

Brief Introduction

HAILONG GROUP - NINGBO WELLISH HI-TECH MACHINERY CO.,LTD. (Previous HAITAI HI-TECH MACHINERY CO.,LTD.) is located in HAILONG Industrial Park (Area A), National Development Zone • Beilun, Ningbo. Our company is long engaged in the professional manufacture of high precision injection molding machine. We have successively introduced machines with clamping force from 90-3000Tons as well as more than 20 types of special application machines which is leading the market.

Our company has a high qualified team who are specialized in the research and development as well as manufacturing engineering technology for all kinds of injection molding machine for long time. We have created lots of injection molding machine product proprietary technology and we have built up quick response output mechanism that can offer personalized solutions for our customer based on their requirements. With strong and powerful strength for the technology design and equipment manufacture, our products design has integrated with international advanced technology as well as the ideas of keeping on improving, creation and transcendence.

Based on the powerful strength of the head company HAILONG GROUP, our company has built a HAILONG machinery intelligent manufacture system. Integrated with European technology, “WELLISH” & “AOTAI” brand several series of export-oriented high end special application injection molding machine are very popular with customers from home and abroad.

海龙工业园 / A区
HAILONG Industrial Park / Area A

海龙机械★智能制造步入示范

HAILONG MACHINERY
Enter the age of intelligent manufacturing





自润滑专用套

用于关节、拉杆、导杆处，大幅增加合模部件的使用寿命，并减少润滑加油的频率。

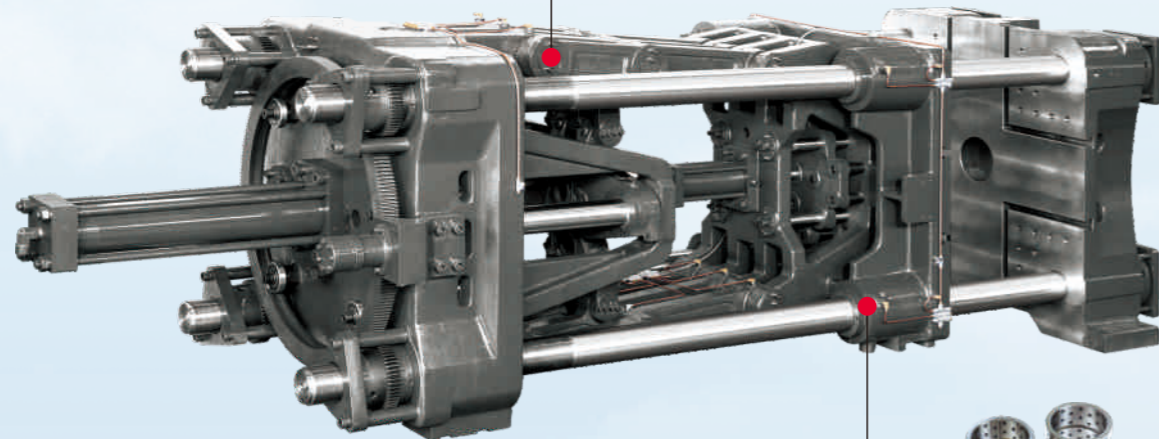
Self-lubricating special sets

Used for joints, tie-bars and guide bars, which can substantially increase the lifetime of clamping unit, and reduce the lubricating frequency as well.



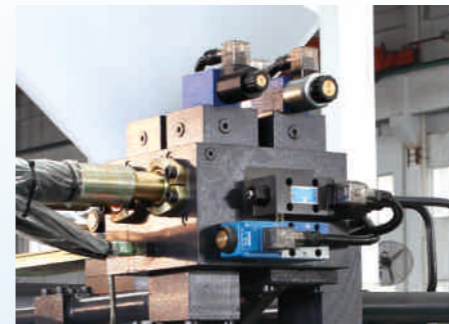
含油轴套

Oil bushings



领衔应用

Advanced applications



高精注射单元压力闭环/选配

High precision injection with pressure closed loop function (OPTIONAL)

准确计量 快速敏捷

Accurate measurement
Fast response

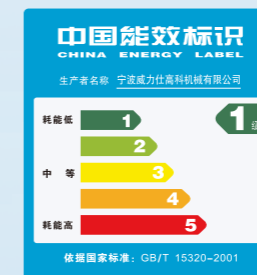


高品质螺杆组

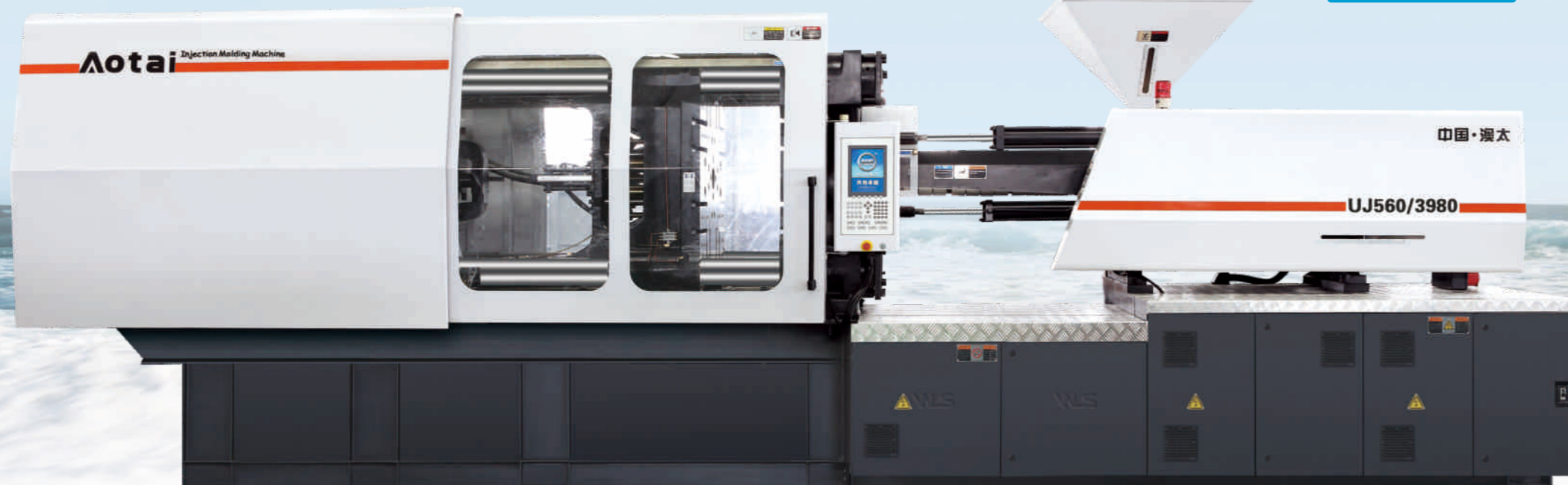
特殊优质合金材料和处理，对结构与精度进行重点设计，达到与众不同的射出计量和高标准精度。

High quality screw set

The use of special high-quality alloy materials and processing, to focus on the structure and precision design to achieve different injection metering accuracy and high standards.



"澳太" U系列&J款伺服节能机



"AOTAI" U Series / J Type Energy Saving Servo Machine

欢迎选购CE标准产品

Welcome to choose machines with CE standard as option





曾列火炬计划★倡导节能技术

Included in the NATIONAL Torch plan,
Advocating energy-saving technology

展现高精度

机器工况中的精确位置、压力、速度和保压，确保射胶计量的重复精度误差<0.3%，实现精密成型

Show High Precision

The accurate injection positioning, pressure, speed and pressure maintaining, to ensure the repeatability error of injection accuracy less than 0.3% to achieve precision molding.

超强节能特性

同样塑料制品的生产与普通注塑机相比较，节能率通常可达到45%-75%

Super Energy-Saving Features

Compared with standard injection machine, the energy saving rate can reach 45%-75% for the same plastic production.

高效率

总效率比普通机提高10%左右，拖动能力提高18%左右

High Efficiency

Compared with standard machine, the total efficiency can increase by 10% and dragging capacity is can increase by 18%.

高响应系统

系统加速和减速性能敏捷，力和速度的调整灵敏，采样处理速度达100KHz，快速启动时间0.05s

High Response System

The system acceleration and deceleration performance is quite agile and force&speed regulation is very sensitive. The sampling processing speed can reach 100KHz and system quick start time can reach 0.05s.

保持稳定可靠

压力 / 速度稳定，保压切换平稳精确

Maintain Stability and Reliability

The pressure or speed is stable and switch of pressure maintaining is smooth and accurate.

低油温

实现避免高压卸荷，工况中低油温状态，提高机器使用性能与使用时效，节约大量冷却水

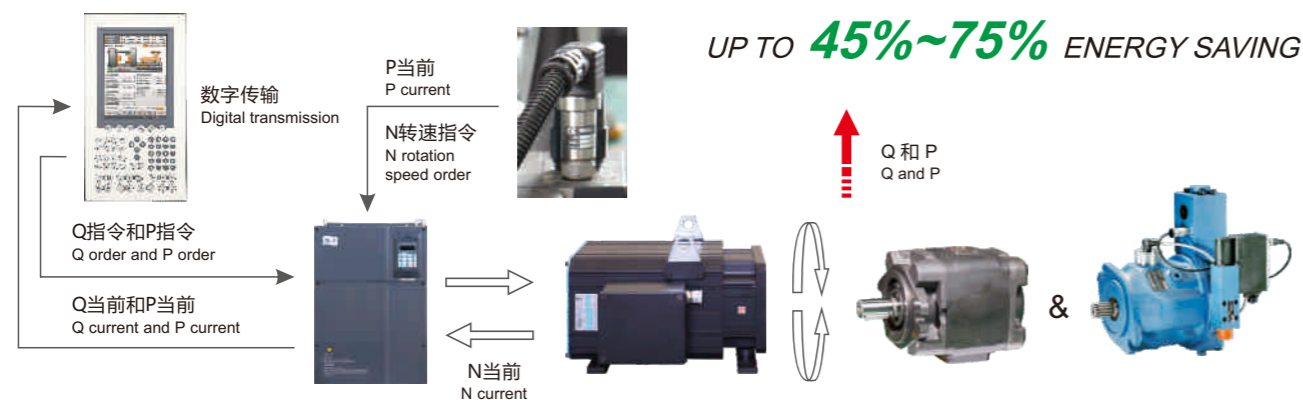
Low Oil Temperature

Avoid high pressure unloading and low oil temperature situation during operation. Improve the operation performance, promote using efficiency and save a large quantity of cooling water.

节能J型特性 Energy-saving J series main features

J型系统的设计为公司技术领先者倡导的国内最早发起和研制被国家列入火炬计划的高节能注塑机，采用伺服马达驱动对机器工作状态是根据注塑制品工要求，将数据编入控制器后高速指令机器个动作不同负载需求，伺服驱动系统运行过程的线性与工艺指令保持高度跟随性，使系统的压力 / 流量形成闭环，实现了高机能&高节能(45%~75%)的科学结合，高响应系统使机器效率≥98%。

J Series system design high energy-saving injection molding machine has been listed in our National Torch Plan and we're the earliest domestic company who is engaged in this project. Servo motor can dictate different machine action according to product workmanship requirement, it will input data into the controller and instruct each machine's movement quickly based on different load demand. The linearity of servo driving system operational process keeps good tracking with technological instruction. Therefore, the system pressure and flow becomes a closed loop, which achieves scientific combination of high machine performance & high energy-saving(45%~75%). With this high-response system, the machine working efficiency can reach 98% or more.



"澳太"U系列/J款伺服节能系统/装置

"AOTAI" U Series / J Type Energy Saving Servo System Configuration

控制系统

- EST彩屏多功能/高端控制器
- 程序深层调整&维护的网通
- 空/负载参数设定/节能输出自控模块
- 高响应压力/流量闭环控制
- 多国语言选用&大容量模具组记忆功能

CONTROL SYSTEM

- EST multifunction high end controller
- Program further adjustment & Network maintenance
- Zero load & Over load parameter settings / Energy-saving output self-control module
- High-response pressure/flow closed-loop control
- Multiple language selection& Large-capacity mold group memory function

液压系统

- 伺服马达驱动（装置）高性能泵浦
- 系统压力/流量分离调节多级控制
- 空/负载节能输出自动控制

HYDRAULIC SYSTEM

- Servo motor drive unit & high performance pump
- System pressure/flow separation regulation and multilevel control
- Non-load & over load energy-saving output self-control

锁模系统

- 斜排式双曲肘锁模机构/同步齿轮液压调模
- 高灵敏低压模具保护装置
- 多级开合模压力/速度&位置尺数控
- 集中式自动分配油脂润滑&含油轴套
- 中、大机液压抽插芯（中子2组）接口

CLAMPING SYSTEM

- Diagonal hinges twin toggle clamping mechanism/ Mold adjustment by synchronous gear hydraulic driving
- High sensitivity & low pressure mold protection device
- Multi-step mold opening & clamping pressure / Speed & position transducer digital control
- Centralized automatic distribute grease lubrication & oil bushings
- Hydraulic pull and insert cores (2 pcs of core) connector for medium and large size machine

注射系统

- 双缸平衡式高敏捷注射机构
- 多级注射压力/速度&位置数控
- 液压马达驱动螺杆与转速检测
- 储料电液比例背压阀控制（360T及以上机）
- 注射计量重复精度监测控制
- 储料动作防流涎控制
- 冷料启动储料防护控制
- 料管加热PID控制
- 喷嘴校准微调

INJECTION SYSTEM

- Double cylinder balanced type & High agility mechanism
- Multi-step injection pressure/ Speed & position digital control
- Hydraulic motor drives screw and rotation speed (RPM) detection
- Material charging electro-hydraulic proportional back pressure valve control (360T machine and above)
- Injection metering repetitive precision (repeat accuracy) monitoring and controlling
- Nozzle control in charging movement
- Cool material starts with charging protection control
- Barrel heating by PID control
- Nozzle calibration by fine adjustment

产品配置表，敬请另行垂询。

Please feel free to contact us if you need machine configuration list for more details, thank you!



PET & PVC 专用注塑机

PET & PVC Special Injection Molding Machine



- ◆ 高性能镀铬或不锈钢PVC专用螺杆
 - ◆ 加宽机门
 - ◆ 配备两组以上的抽芯装置
 - ◆ 多段机筒风冷装置, 精确控制料温
 - ◆ 大扭矩塑化液压马达
- ◆ PVC special screw with high performance hard chromium plating or with stainless steel
 - ◆ Widen the safety door (Optional)
 - ◆ Equipped with two or more core pulling device
 - ◆ Multi stage of air cool device on barrel for precise control of material temperature
 - ◆ Large torque plasticizing hydraulic motor

垫填料夹芯注塑机

Filler Sandwich Injection Molding Machine

在传统塑料射出成型机上增加一组复合式射嘴及料管组成独立的双料管, 在射出的过程中可以同时或间隔方式将两种溶胶透过共同射嘴射入模穴中达成双料共射, 其中外层的溶胶称为皮层料, 内层的溶胶称为核心料。



For some special products production, such machine add one set of compound nozzle and feeding barrel assembly on the traditional machine so as to achieve independent double barrels. During injection period, they can achieve double injection by charging with two materials and inject to mold cavity through the conjunct nozzle simultaneous or intervalic, in which the outer charge material is called external material while the inner one is called core material.

BMC 专用机款

BMC Special Injection Molding Machine

配备针对BMC原料专用的热固性类理化部件, 具有特殊填料自动压紧装置和特别高扭力液压马达储料&特殊射出油缸等组成的系统优化模块。

BMC injection molding machine is equipped with thermosetting physicochemical components which is specialized for BMC material. And it has system optimization module which is composed of specific charging automatic compressing device, specially high torque hydraulic motor for charging and special injection hydraulic cylinder etc.



① 进口品牌控制器

进口常选: KEBA科霸与B&R贝加莱为主以体现高响应&多功能人性化控制

② CE标准系统&款型

获CE认证, 电/液系统&机器款型以提升工况中安全概率

③ 双油路快速系统

当开合模的同时进行顶出或选预塑的双动作以实现增快机器循环高效率

④ 高效非标功率/扩容系统

在标准机功率上增加驱动功效以明显加快工况循环&实现优质高效

⑤ 高增速/蓄能器装置

适用于超薄&快速成型类制品产出以解决精密&高难度制品工艺要求

⑥ 高精注射单元压力传感装置

提升注射单元工况中系统压力实时循环以实现注射/保压/预塑背压闭环功效

⑦ 高精注射伺服阀/闭环装置

适用于极精密高端制品工艺要求以实现注射重复精度有效提高

⑧ 单缸快速注射装置

适用含360T以下合模匹配单缸高速射出成型以确保超薄类制品产出实现优质高效

⑨ 合模&注射最佳机能组合

适用于针对性特种制品合模&注射/非标/优化匹配的个性化组合机, 以实现最佳量产的适从性应用

I. Imported brand controller

Imported options: mainly KEBA and B&R, Display the concept of high response & multifunction people-oriented control.

II. CE standard system & series

Hybrid system & machine series, which is honored with CE Certificate, To improve the safety rate during machine operation.

III. Overlap movement high speed system

Ejection or plasticizing when mold opening & clamping, To increase machine cycle and achieve high efficiency.

IV. High efficiency non-standard power/capacity expansion system

Add driving function on standard machine power, So to increase operation cycle obviously & achieve super quality and high efficiency.

V. High speed acceleration /accumulator unit

Suitable for the production of thin-wall& fast molding products, So to meet the processing requirements of precision & high difficulty products.

VI. High precision injection unit pressure sensor device

Improve system pressure real time cycle during injection unit operation, So to realize the closed-loop effect of injection/holding pressure and pre-plasticizing & back pressure.

VII. High precision injection servo valve/closed-loop device

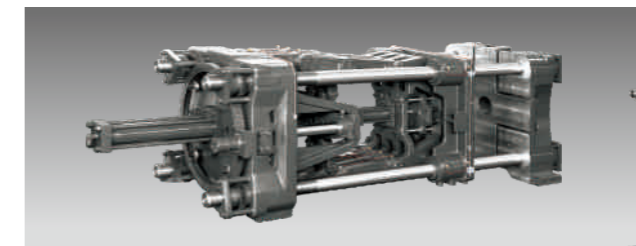
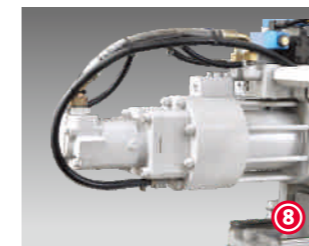
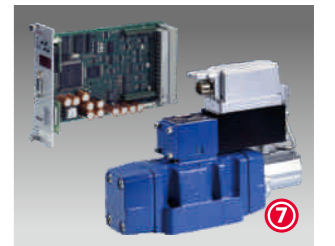
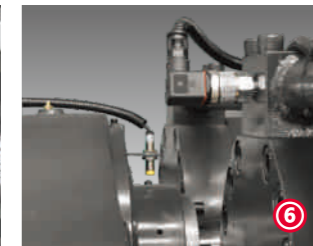
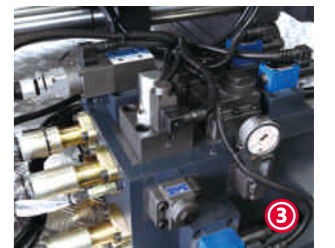
Applicable to processing requirements of extremely precision high end products, So to increase injection repeat accuracy efficiently.

VIII. Single cylinder fast injection device

Appropriate for 360T (or below) machine's clamping unit to match single cylinder high injection molding, So to ensure the production of ultrathin-wall products, and realize super quality and high efficiency.

IX. Optimum function combination of clamping & injection

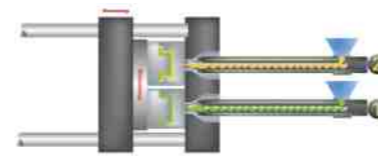
Suitable for the pertinent special products by nonstandard and optimum customized combination of clamping unit & injection unit machine, So to reach most suitable application of optimum mass production.





特种注塑机

Injection Molding Machine for Special Application
30~2800Tons



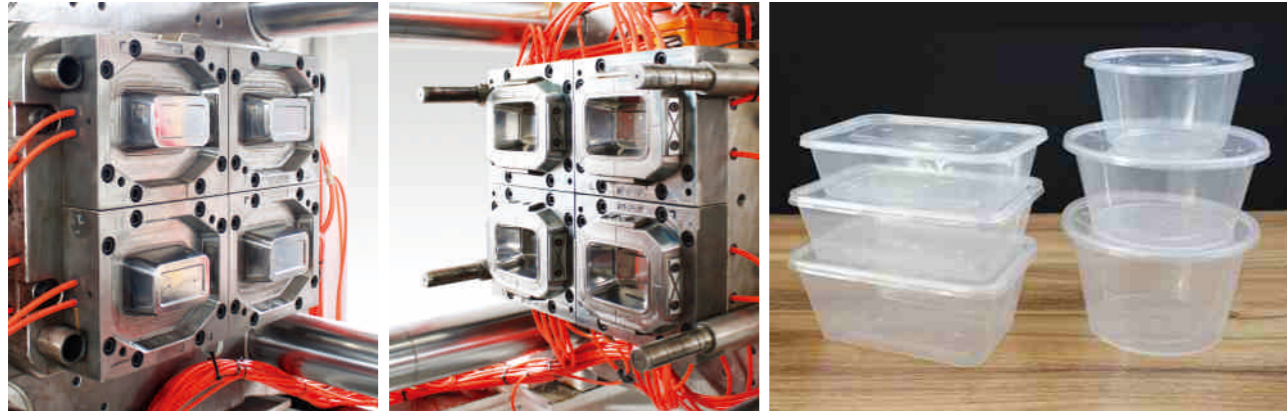
S系列 清双色机

S series dual color machine



H系列 薄壁精密高速机

H series high speed & precision machine for thin-wall products

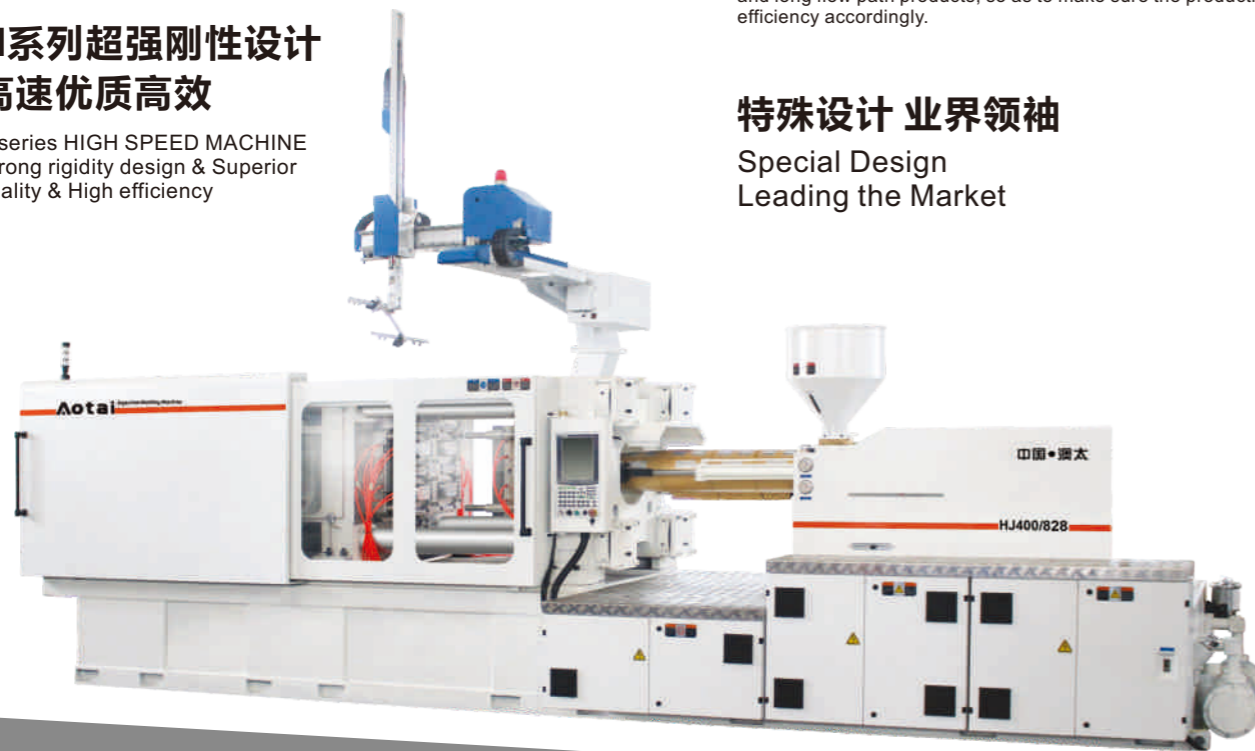


- 合模机构 / 装置及机身超强刚性的高负载设计，确保稳定、耐用。
- 相适应的液压系统设计与高响应控制器的匹配，确保减少机器循环周期，实现高速、精密的机能要求。
- 机器采用涵油自润滑轴套和优质钢拉杆，锁轴高寿命设计、制造。
- 同轴向高敏捷单缸快射机构，熔料&塑化性能超常提高。
- 机器较适用薄类包装和长流边制品加工，确保加工、生产效率。

- Clamping structure/unit as well as machine body is with high rigidity & high load capacity design, which can ensure machine's stability and durability.
- Suitable hydraulic system design matches with high response controller, which guarantees the machine with shorter cycle time and achieve high speed/precision function requirement.
- We have adopted oil self-lubricating bushings and good quality steel rod as well as long lifespan design and manufacture of clamping pins for the machine.
- Coaxial and high agility single cylinder fast injection structure has greatly improved the plastics melting capacity & plasticizing performance.
- The machine is suitable for the processing of thin-wall packing and long flow path products, so as to make sure the production efficiency accordingly.

H系列超强刚性设计 高速优质高效

H series HIGH SPEED MACHINE
Strong rigidity design & Superior quality & High efficiency



特殊设计 业界领袖 Special Design Leading the Market

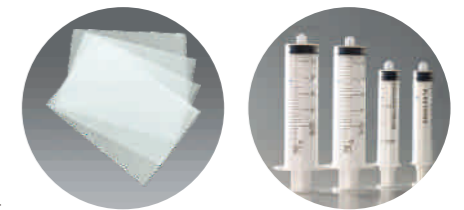
★高速机★油电机★2板机★双色机

D系列 油电复合-伺服机

D series hybrid servo machine

- 熔胶、注射由伺服马达驱动滚珠丝杠动作
- 熔胶背压、注射保压，实现全闭环数控，射出重复精度高达0.01mm
- 合模机构由伺服马达驱动高精定量泵/液压传动
- 整机动作根据制品工艺/实时控制精准运行
- 机器循环全部应用伺服系统/匹配高响应控制器
- 油/电复合机能普遍替代全电机适用超薄&高精度制品加工

- The servo motor drives screw ball so to achieve machine pre-plasticizing and injection movement
- Pre-plasticizing, backpressure, injection and holding pressure has realized full closed-loop numerical control, making injection repeat precision reach up to 0.01mm
- The clamping structure consists of servo motor drives high precision fixed pump / hydraulic transmission
- Overall machine movement is timely controlled and accurately run according to products processing technology
- Servo system as well as well-matched high response controller has fully applied to machine cycle
- Hybrid machine has been a popular alternative for full electric machine, which is applicable to ultra-thin-wall and high precision products processing



领衔★高精度 Standing at the front ★ High precision



Z系列 2板机

Z series two platen machine

- 根据制品需求，便于定制开模行程
- 开合模敏捷、平稳，提高运行周期
- 增加使用寿命，减少维护费用
- 框式模板特强刚性，缩小占地面积

- According to product demand, easy to customize opening stroke.
- Mold opening & clamping with agility and stability, which has improved cycle time.
- Increase the service life and reduce maintenance cost.
- With strong stiffness of frame platen, which can reduce the floor area.



High speed machine & Hybrid machine & Two platen machine & Two color machine

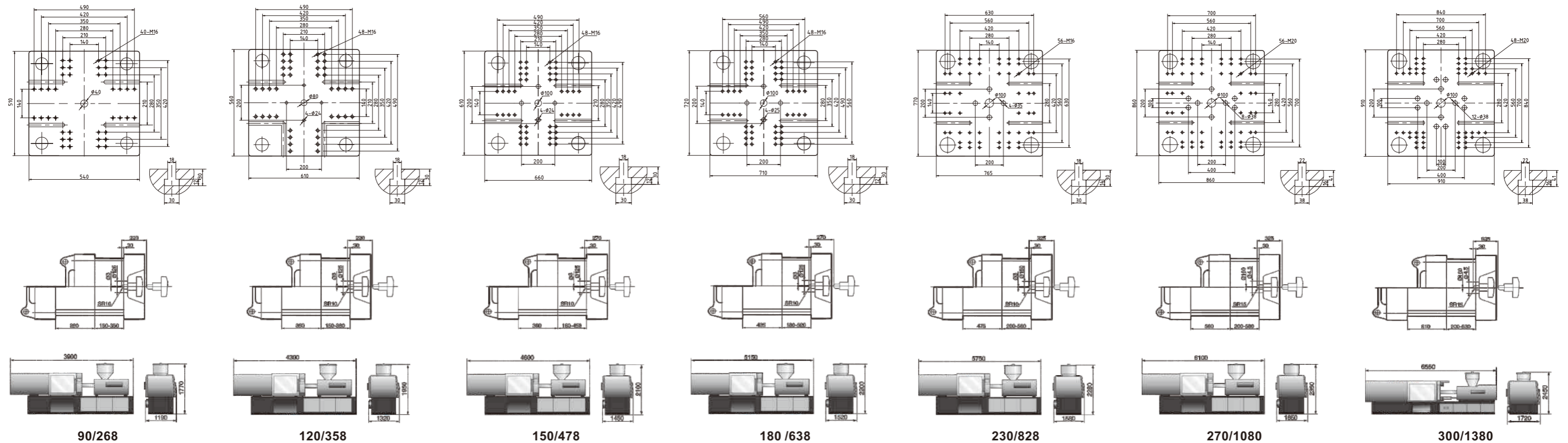


AOTAI 澳太

U系列规格参数

U series technical parameters

国际标准型号	INTERNATIONAL CLASS NO.	90/268				120/358				150/478			180/638			230/828			270/1080			300/1380			
项目/规格	TYPE / SPECIFICATION	U/90C				U/120C				U/150C			U/180C			U/230B			U/270C			U/300C			
螺杆型式	Screw type	A	B	C	D	A	B	C	D	A	B	C	A	B	C	A	B	C	A	B	C	A	B	C	
注射装置	Injection Unit																								
螺杆直径	Screw diameter	mm	30	32	35	38	32	35	38	42	38	42	45	42	45	50	45	50	55	50	55	60	55	60	65
螺杆长径比	Screw L/D ratio	L/D	23.5	22	20.1	18.5	24.1	22	20.3	18.4	21	19	17.7	23.6	22	19.8	24.4	22	20	24.2	22	20.2	24	22	20.3
理论注射容量	Shot volume (theoretical)	CM ³	117	133	160	190	136	163	192	235	227	277	318	311	357	441	397	490	593	530	641	763	676	805	945
注射重量(ps)	Injection weight (PS)	g	106	121	146	173	124	148	175	214	207	252	289	283	325	401	361	446	540	482	583	694	615	733	860
注射速率	Injection rate	g/s	71	81	97	114	74	89	105	128	94	115	132	139	160	198	136	168	203	188	227	270	224	266	312
注射压力	Injection pressure	Mpa	230	203	170	144	260	219	186	152	209	171	149	203	177	143	207	168	139	204	169	142	202	170	145
螺杆转速	Screw speed	rpm	225				210				185			180			155			180			220		
合模装置	Clamping Unit																								
合模力	Clamping force	KN	900				1200				1500			1800			2300			2700			3000		
移模行程	Open stroke	mm	320				350				380			435			475			560			610		
拉杆内间距(宽×高)	Space between tie-bars(W*H)	mm	360×330				410×370				460×420			490×470			520×520			580×580			650×650		
最大模厚	Max. mould height	mm	350				380				450			520			560			580			630		
最小模厚	Min. mould height	mm	150				150				160			180			200			200			200		
顶出行程	Ejector stroke	mm	90				120				120			140			150			170			170		
顶出力	Ejector force	KN	30				38				50			50			70			70			70		
其它	Others																								
最大油泵压力	Pump max. pressure	Mpa	16				16				16			16			16			16			16		
电机功率(伺服)	Pump motor power (servo)	KW	11 (11)				13 (14)				13 (18.5)			18.5 (23)			18.5 (23)			22 (29)			30 (33)		
电热功率	Heating power	KW	6.8				7.5				9.3			12.3			14.8			16.8			18.3		
加热段数	Numbers of heating area	Segment	3+1				3+1				3+1			3+1			3+1			3+1			3+1		
外形尺寸(长×宽×高)	Machine dimension (L*W*H)	M	3.9×1.19×1.77				4.3×1.32×1.95				4.6×1.45×2.1			5.15×1.52×2.2			5.75×1.58×2.28			6.1×1.65×2.35			6.55×1.72×2.45		
油箱容积	Oil tank cubage	L	180				230				270			300			300			380			385		
机器重量	Machine weight	TON	2.8				3.5				4			6			7			9			10		



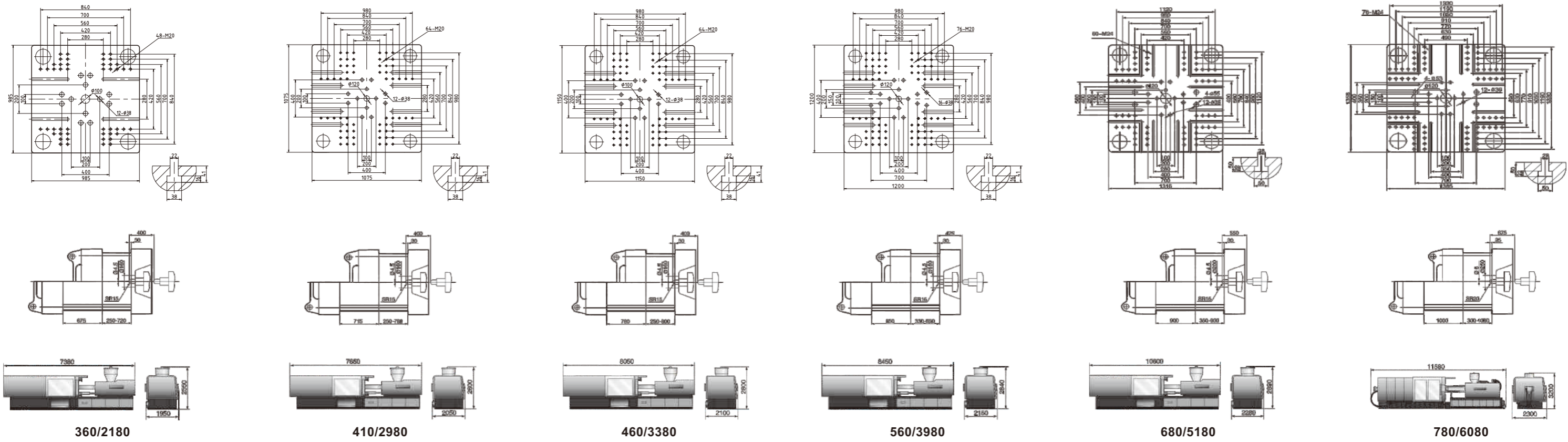


AOTAI 澳太

U系列规格参数

U series technical parameters

国际标准型号	INTERNATIONAL CLASS NO.	360/2180				410/2980				460/3380				560/3980				680/5180				780/6080				
项目/规格	TYPE / SPECIFICATION	U/360C				U/410C				U/460D				U/560D				U/680C				U/780C				
螺杆型式	Screw type	A	B	C	D	A	B	C	D	A	B	C	D	A	B	C	D	A	B	C	D	A	B	C	D	
注射装置	Injection Unit																									
螺杆直径	Screw diameter	mm	60	67	70	75	70	75	80	85	75	80	85	90	80	85	90	100	90	95	100	105	90	95	105	110
螺杆长径比	Screw L/D ratio	L/D	24.6	22	21.1	19.7	23.6	22	20.7	19.4	22	20.6	19.4	18.3	22	20.7	19.6	17.6	23.2	22	20.9	19.9	23.2	22	19.9	19
理论注射容量	Shot volume (theoretical)	CM ³	947	1181	1289	1480	1501	1723	1960	2213	1767	2010	2269	2544	2212	2497	2799	3456	2926	3260	3612	3982	3085	3437	4199	4608
注射重量(ps)	Injection weight (PS)	g	862	1075	1173	1347	1366	1568	1784	2014	1608	1829	2065	2315	2013	2272	2547	3145	2663	2967	3287	3624	2807	3128	3821	4193
注射速率	Injection rate	g/s	278	346	378	434	335	384	438	493	356	405	457	513	443	500	561	692	549	612	678	747	574	640	782	858
注射压力	Injection pressure	Mpa	231	186	170	148	199	173	152	135	191	168	149	133	179	159	142	115	177	159	143	130	195	175	143	130
螺杆转速	Screw speed	rpm	200				150				160				130				150				115			
合模装置	Clamping Unit																									
合模力	Clamping force	KN	3600				4100				4600				5600				6800				7800			
移模行程	Open stroke	mm	675 (705)				715 (720)				780 (790)				850 (860)				900 (920)				1000 (1020)			
拉杆内间距(宽×高)	Space between tie-bars(W*H)	mm	680×680				730×730				780×780				830×830				895×895				980×980			
最大模厚	Max. mould height	mm	720				780				800				850				900				1000			
最小模厚	Min. mould height	mm	250				250				250				330				350				400			
顶出行程	Ejector stroke	mm	180				180				220				240				250				300			
顶出力	Ejector force	KN	70				90				110				150				150				210			
其它	Others																									
最大油泵压力	Pump max. pressure	Mpa	16				16				16				16				16				16			
电机功率(伺服)	Pump motor power (servo)	KW	37 (45.2)				37 (45.2)				45 (52)				55 (58)				30+37 (66)				37+37 (79)			
电热功率	Heating power	KW	24.7				29.3				29.3				31.4				42.95				56.7			
加热段数	Numbers of heating area	Segment	4+1				5+1				5+1				5+1				5+1				6+1			
外形尺寸(长×宽×高)	Machine dimension (L*W*H)	M	7.38×1.95×2.55				7.65×2.05×2.6				8.05×2.1×2.8				8.45×2.15×2.84				10.6×2.28×2.89				11.58×2.3×3.2			
油箱容积	Oil tank cubage	L	510				690				695				795				1100				1200			
机器重量	Machine weight	TON	13.5				16				18				21				29.8				43			



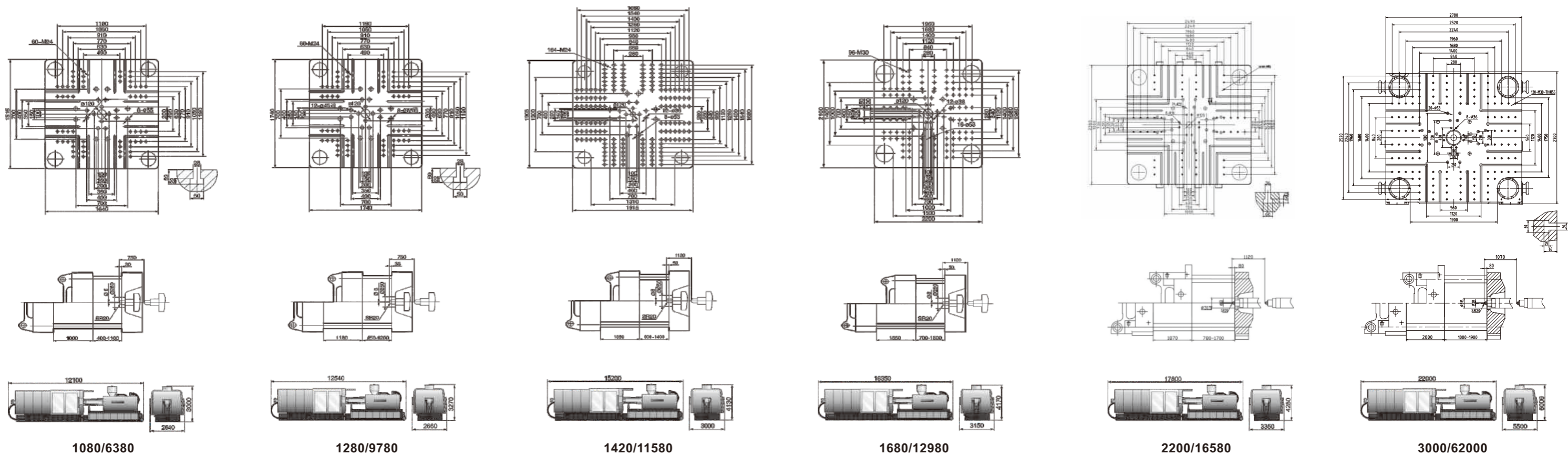


AOTAI 澳太

U系列规格参数

U series technical parameters

国际标准型号	INTERNATIONAL CLASS NO.	1080/6380				1280/9780				1420/11580				1680/12980				2200/16580			3000/62000			
项目/规格	TYPE / SPECIFICATION	U/1080C				U/1280C				U/1420C				U/1680C				U/2200C			U/3000C			
螺杆型式	Screw type	A	B	C	D	A	B	C	D	A	B	C	D	A	B	C	D	A	B	C	A	B	C	
注射装置	Injection Unit																							
螺杆直径	Screw diameter	mm	90	100	110	120	110	115	120	125	110	120	130	140	120	130	140	150	150	160	170	180	210	220
螺杆长径比	Screw L/D ratio	L/D	25.6	23	20.9	19.2	23	22	21.1	20.3	25.1	23	21.2	19.7	26	24	22.3	20.8	23.5	22	20.7	24.8	21	21
理论注射容量	Shot volume (theoretical)	CM ³	3180	3927	4750	5655	5270	5760	6272	6806	5559	6616	7765	9006	6673	7831	9082	10426	13900	15800	17900	29390	40000	43904
注射重量(ps)	Injection weight (PS)	g	2895	3574	4320	5145	4796	5242	5708	6193	5059	6021	7066	8195	6072	7126	8265	9488	12688	14436	16297	26740	36400	39953
注射速率	Injection rate	g/s	581	717	868	1033	793	867	944	1024	752	895	1050	1218	1057	1240	1438	1650	1315	1496	1689	1468	2000	2200
注射压力	Injection pressure	Mpa	217	176	145	122	186	170	156	144	208	175	149	128	194	165	142	124	173	152	134	210	154	141
螺杆转速	Screw speed	rpm	100				90				90				85				75			50		
合模装置	Clamping Unit																							
合模力	Clamping force	KN	10800				12800				14200				16800				22000			30000		
移模行程	Open stroke	mm	1080				1300				1350				1550				1870			2000		
拉杆内间距(宽×高)	Space between tie-bars(W*H)	mm	1120×1080				1260×1160				1310×1300				1500×1400				1750×1600			1900×1750		
最大模厚	Max. mould height	mm	1100				1250				1400				1500				1700			1900		
最小模厚	Min. mould height	mm	400				450				600				700				780			1000		
顶出行程	Ejector stroke	mm	325				360				360				420				420			450		
顶出力	Ejector force	KN	248				248				260				420				490			565		
其它	Others																							
最大油泵压力	Pump max. pressure	Mpa	16				16				16				17.5				16			16		
电机功率(伺服)	Pump motor power (servo)	KW	37+45 (91)				45+55 (99)				55+55 (116)				45+45+55 (151)				45+55+55 (168)			55+55+55+55 (232)		
电热功率	Heating power	KW	59				66.1				86				94.9				114			117		
加热段数	Numbers of heating area	Segment	6+1				6+1				7+1				8+1				9+1			10+1		
外形尺寸(长×宽×高)	Machine dimension (L*W*H)	M	12.1×2.64×3				12.82×2.78×3.35				15.2×3.00×4.13				16.35×3.15×4.17				18.6×3.6×4.42			22.00×5.50×5.00		
油箱容积	Oil tank cubage	L	1600				2100				2900				3000				3700			4500		
机器重量	Machine weight	TON	53				62				90				125				140			220		





AOTAI 澳太

U系列•PVC规格参数

U series · PVC technical parameters

国际标准型号	INTERNATIONAL CLASS NO.	150/478			180/638			230/828			270/1080			300/1380			360/2180				410/2980				460/3380				560/3980				680/5180				
项目/规格	TYPE / SPECIFICATION	U150V			U180V			U230V			U270V			U300V			U360V				U410V				U460V				U560V				U680V				
螺杆型式	Screw type	A	B	C	A	B	C	A	B	C	A	B	C	A	B	C	A	B	C	D	A	B	C	D	A	B	C	D	A	B	C	D	A	B	C	D	
注射装置 Injection Unit																																					
螺杆直径	Screw diameter	mm	38	42	45	42	45	50	45	50	55	50	55	60	55	60	65	60	67	70	75	70	75	80	85	75	80	85	90	80	85	90	100	90	95	100	105
螺杆长径比	Screw L/D ratio	L/D	21	19	17.7	23.6	22	19.8	24.4	22	20	24.2	22	20.2	24	22	20.3	24.6	22	21.1	19.7	23.6	22	20.7	19.5	22	20.6	19.4	18.3	22	20.7	19.6	17.6	23.2	22	20.9	19.9
理论注射容量	Shot volume (theoretical)	CM ³	227	277	318	311	357	441	397	490	593	530	641	763	676	805	945	947	1181	1289	1480	1501	1723	1960	2213	1767	2010	2269	2544	2212	2497	2799	3456	2926	3260	3612	3982
注射重量(pvc)	Injection weight (pvc)	g	289	353	405	396	455	562	506	624	755	675	817	972	861	1026	1204	1206	1505	1642	1886	1912	2195	2497	2819	2251	2561	2891	3241	2818	3181	3566	4403	3728	4153	4602	5073
注射速率	Injection rate	g/s	132	161	185	195	224	277	190	235	284	263	318	378	314	372	437	389	484	529	608	469	539	613	692	498	567	640	717	620	700	785	970	811	903	1001	1103
注射压力	Injection pressure	Mpa	209	171	149	203	177	143	207	168	139	204	169	142	202	170	145	231	186	170	148	199	173	152	135	191	168	149	133	179	159	142	115	177	159	143	130
螺杆转速	Screw speed	rpm	120			120			110			120			130			120				100				100				80				80			
合模装置 Clamping Unit																																					
合模力	Clamping force	KN	1500			1800			2300			2700			3000			3600				4100				4600				5600				6800			
移模行程	Open stroke	mm	380			435			475			560			610			675 (705)				715 (720)				780 (790)				850 (860)				900 (920)			
拉杆内间距(宽×高)	Space between tie-bars(W*H)	mm	460×420			490×470			520×520			580×580			650×650			680×680				730×730				780×780				830×830				895×895			
最大模厚	Max. mould height	mm	450			520			560			580			630			720				780				800				850				900			
最小模厚	Min. mould height	mm	160			180			200			200			200			250				250				250				330				350			
顶出行程	Ejector stroke	mm	140			140			150			170			170			180				180				220				240				250			
顶出力	Ejector force	KN	50			50			70			70			70			70				90				110				150				150			
其它 Others																																					
最大油泵压力	Pump max. pressure	Mpa	16			16			16			16			16			16				16				16				16				16			
电机功率(伺服)	Pump motor power (servo)	KW	13 (18.5)			18.5 (23)			18.5 (23)			22 (29)			30 (33)			37 (45.2)				37 (45.2)				45 (52)				55 (58)				30+37 (66)			
电热功率	Heating power	KW	9.3			12.3			14.8			16.8			18.3			24.7				29.3				29.3				31.4				42.95			
加热段数	Numbers of heating area	Segment	3+1			3+1			3+1			3+1			3+1			4+1				5+1				5+1				5+1				5+1			
外形尺寸(长×宽×高)	Machine dimension (L*W*H)	M	4.6×1.45×2.1			5.15×1.52×2.2			5.75×1.58×2.28			6.1×1.65×2.35			6.55×1.72×2.45			7.38×1.95×2.55				7.65×2.05×2.6				8.05×2.1×2.8				8.45×2.15×2.84				10.6×2.28×2.89			
油箱容积	Oiltank cubage	L	270			300			300			380			385			510				690				695				795				1100			
机器重量	Machine weight	TON	4			6			7			9			10			13.5				16				18				21				29.8			

U系列•PET规格参数

U series · PET technical parameters



国际标准型号	INTERNATIONAL CLASS NO.	150/478			180/638			230/828			270/1080			300/1380			360/2180				410/2980				460/3380				560/3980				680/5180				
项目/规格	TYPE / SPECIFICATION	U150E			U180E			U230E			U270E			U300E			U360E				U410E				U460E				U560E				U680E				
螺杆型式	Screw type	A	B	C	A	B	C	A	B	C	A	B	C	A	B	C	A	B	C	D	A	B	C	D	A	B	C	D	A	B	C	D	A	B	C	D	
注射装置 Injection Unit																																					
螺杆直径	Screw diameter	mm	38	42	45	42	45	50	45	50	55	50	55	60	55	60	65	60	67	70	75	70	75	80	85	75	80	85	90	80	85	90	100	90	95	100	105
螺杆长径比	Screw L/D ratio	L/D	25	25	25	25	25	25	25	25	25	25	25	25	25	25	25	25	25	25	25	25	25	25	25	25	25	25	25	25	25	25	25	25	25	25	25
理论注射容量	Shot volume (theoretical)	CM ³	227	277	318	311	357	441	397	490	593	530	641	763	676	805	945	947	1181	1289	1480	1501	1723	1960	2213	1767	2010	2269	2544	2212	2497	2799	3456	2926	3260	3612	3982
注射重量(pet)	Injection weight (pet)	g	283	345	396	388	445	550	495	611	739	661	799	951	843	1004	1178	1181	1472	1607	1845	1871	2148	2444	2759	2203	2506	2829	3172	2758	3113	3490	4309	3648	4064	4503	4964
注射速率	Injection rate	g/s	129	158	181	190	219	271	186	230	278	258	311	370	307	364	427	381	474	518	595	459	527	600	677	488	555	626	701	607	685	769	949	793	884	980	1080
注射压力	Injection pressure	Mpa	209	171	149	203	177	143	207	168	139	204	169	142	202	170	145	231	186	170	148	199	173	152	135	191	168	149	133	179	159	142	115	177	159	143	130
螺杆转速	Screw speed	rpm	150			140			125			150			160			160				130				130				100				115			
合模装置 Clamping Unit																																					
合模力	Clamping force	KN	1500			1800			2300			2700			3000			3600				4100				4600				5600				6800			
移模行程	Open stroke	mm	380			435			475			560			610			675 (705)				715 (720)				780 (790)				850 (860)				900 (920)			
拉杆内间距(宽×高)	Space between tie-bars(W*H)	mm	460×420			490×470			520×520			580×580			650×650			680×680				730×730				780×780				830×830				895×895			
最大模厚	Max. mould height	mm	450			520			560			580			630			720				780				800				850				900			
最小模厚	Min. mould height	mm	160			180			200			200			200			250				250				250				330				350			
顶出行程	Ejector stroke	mm	140			140			150			170			170			180				180				220				240				250			
顶出力	Ejector force	KN	50			50			70			70			70			70				90				110				150				150			
其它 Others																																					
最大油泵压力	Pump max. pressure	Mpa	16			16			16			16			16			16				16				16				16				16			
电机功率(伺服)	Pump motor power (servo)	KW	13 (18.5)			18.5 (23)			18.5 (23)			22 (29)			30 (33)			37 (45.2)				37 (45.2)				45 (52)				55 (58)				30+37 (66)			
电热功率	Heating power	KW	9.3			12.3			14.8			16.8			18.3			24.7				29.3				29.3				31.4				42.95			
加热段数	Numbers of heating area	Segment	3+1			3+1			3+1			3+1			3+1			4+1				5+1				5+1				5+1				5+1			
外形尺寸(长×宽×高)	Machine dimension (L*W*H)	M	4.6×1.45×2.1			5.15×1.52×2.2			5.75×1.58×2.28			6.1×1.65×2.35			6.55×1.72×2.45			7.38×1.95×2.55				7.65×2.05×2.6				8.05×2.1×2.8				8.45×2.15×2.84				10.6×2.28×2.89			
油箱容积	Oiltank cubage	L	270			300			300			380			385			510				690				695				795				1100			
机器重量	Machine weight	TON	4			6			7			9			10			13.5				16				18				21				29.8			

